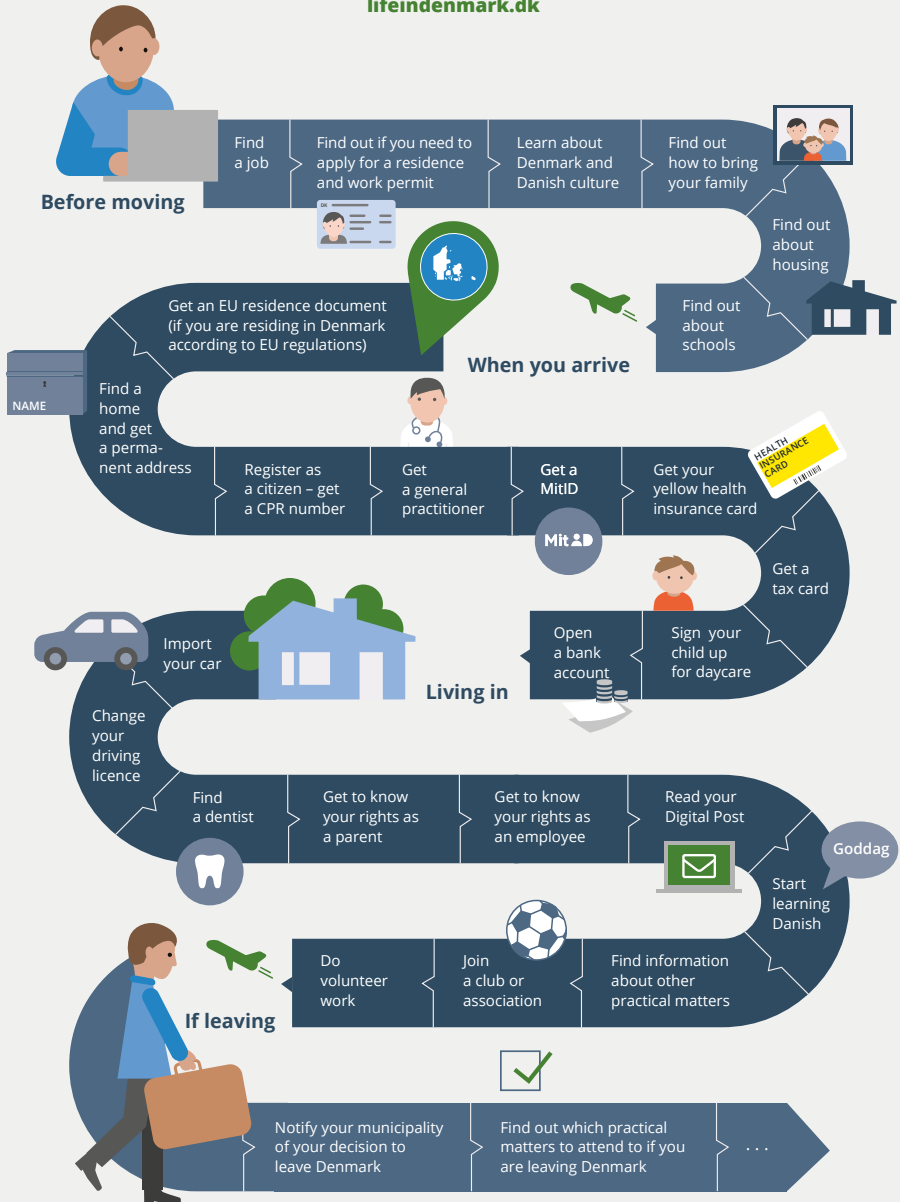
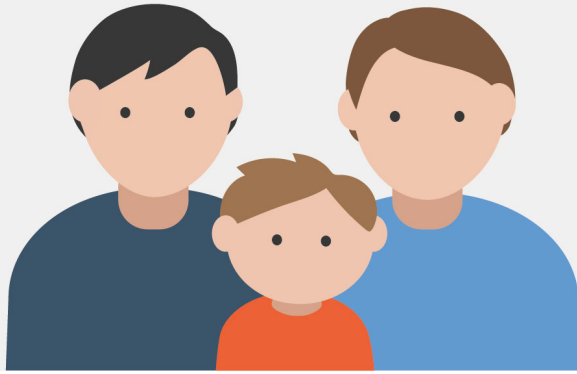


Your journey in Denmark

Visit the official website for international citizens in Denmark offering information from the public sector and self-service if you are **moving to – arriving and living in – or leaving** Denmark.

lifeindenmark.dk





The Danish Agency for International Recruitment and Integration (SIRI)

If you come to Denmark to study or work, SIRI is the first Danish authority you meet on your journey. SIRI issues EU residence documents to EU/EEA/Swiss nationals and residence and work permits to third country nationals.

► newtodenmark.dk

International Citizen Service (ICS)

Located in Copenhagen, Aarhus, Odense, Aalborg, Sønderborg and Esbjerg, ICS provides registration services (EU residence document, CPR number, MitID, guidance on how to apply for a tax card) for international citizens staying in Denmark more than 3 months. ICS is a collaboration between relevant Danish authorities.

► lifeindenmark.dk/ics

Workindenmark

Part of the Danish Ministry of Employment and member of European Employment Service (EURES), Workindenmark is the national public employment service for international candidates looking for a job in Denmark and for Danish companies looking for foreign employees.

► workindenmark.dk

The Danish Tax Agency

Once you have moved to Denmark and registered for a CPR number, The Danish Tax Agency is ready to guide you at (+45) 7222 2780.

► skat.dk